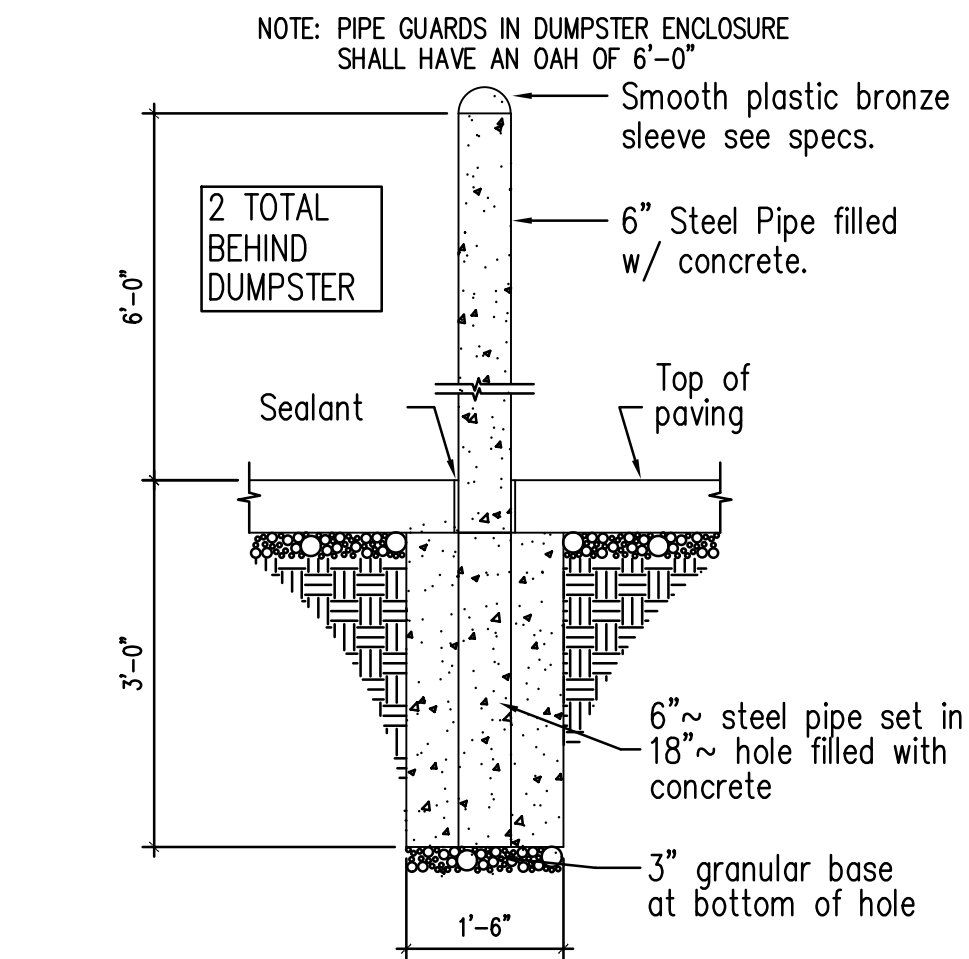
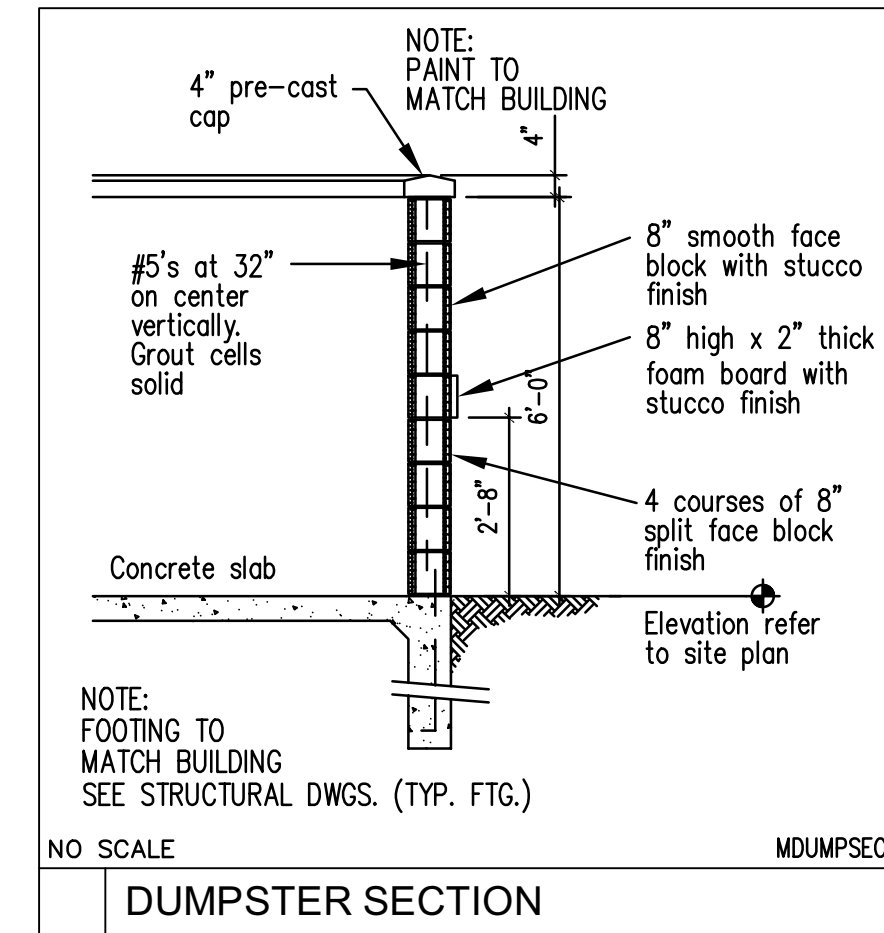


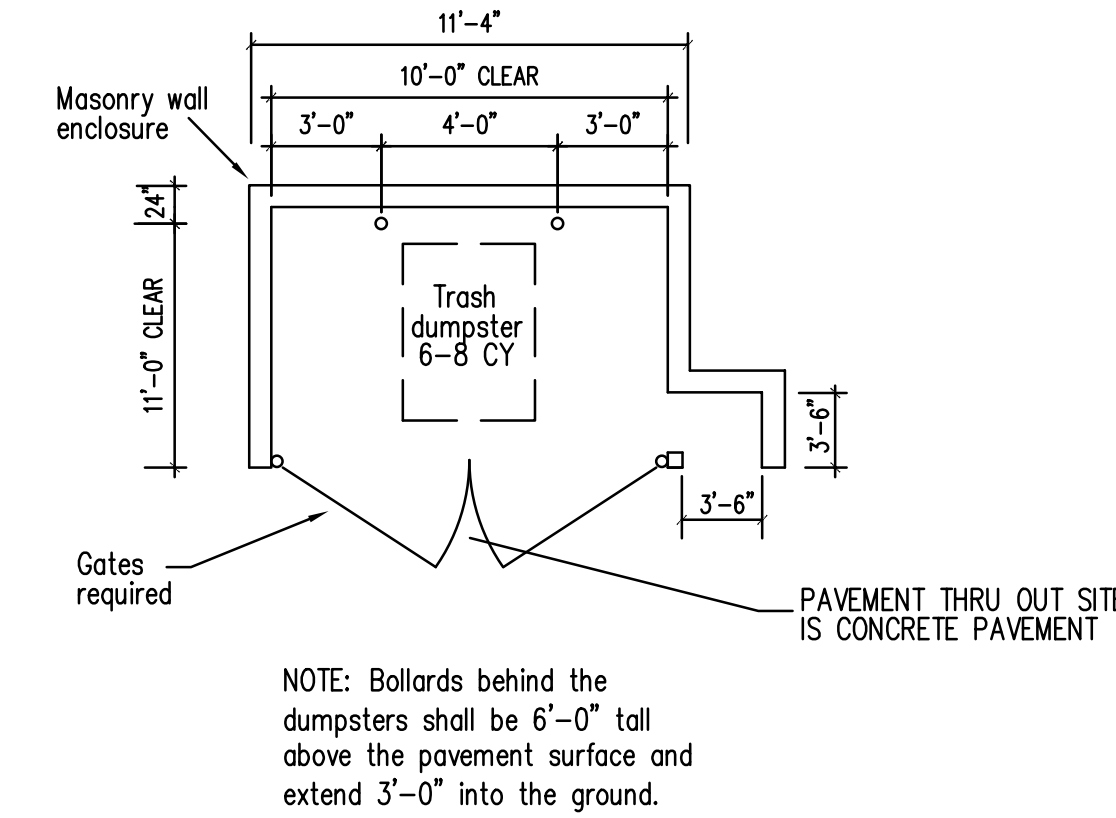
PAVING & DRAINAGE DETAILS PLAN



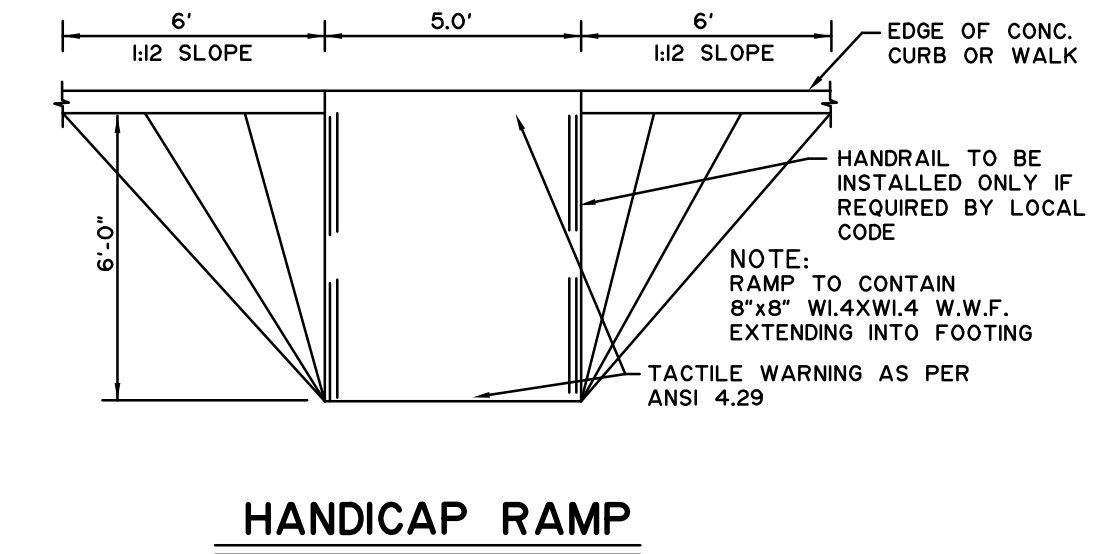
NO SCALE
TYPICAL PIPE GUARD SECTION



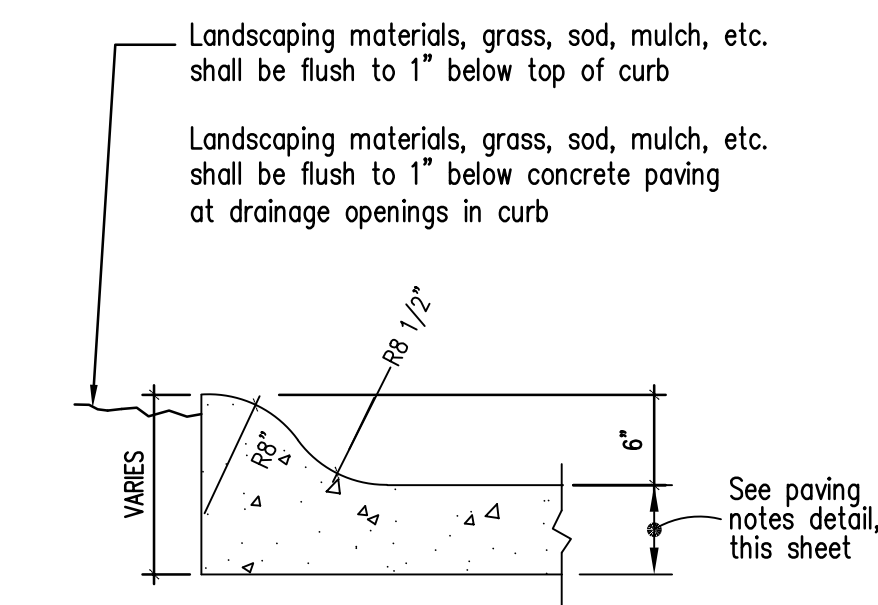
NO SCALE
DUMPSTER SECTION



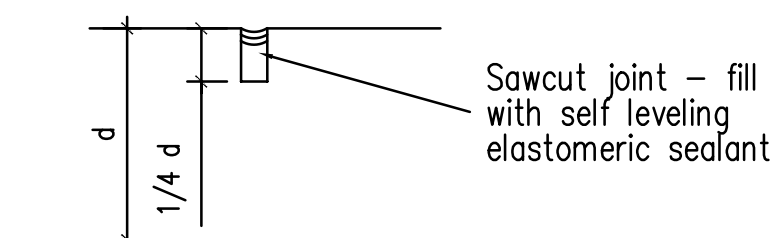
DUMPSTER LAYOUT



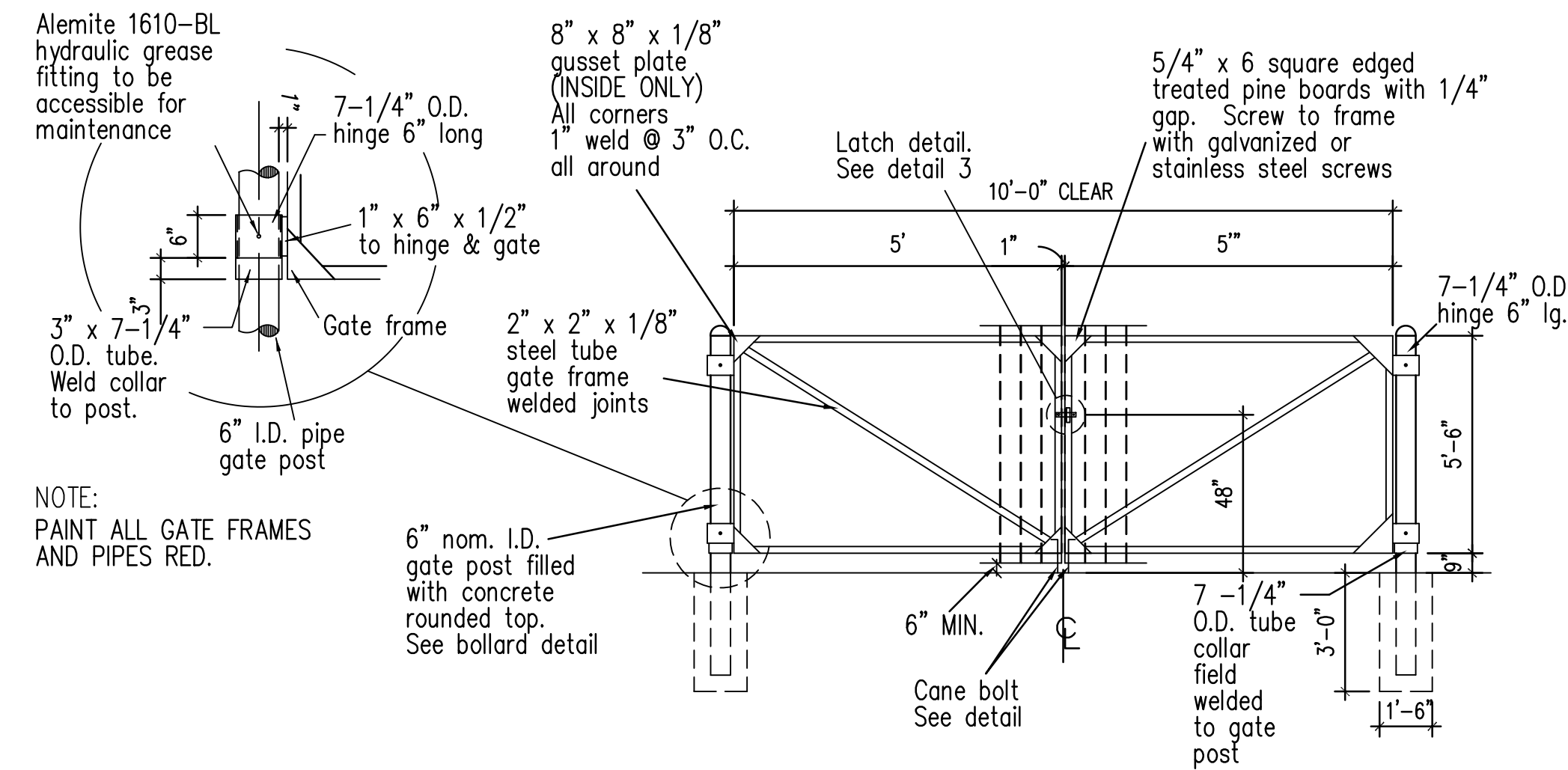
HANDICAP RAMP



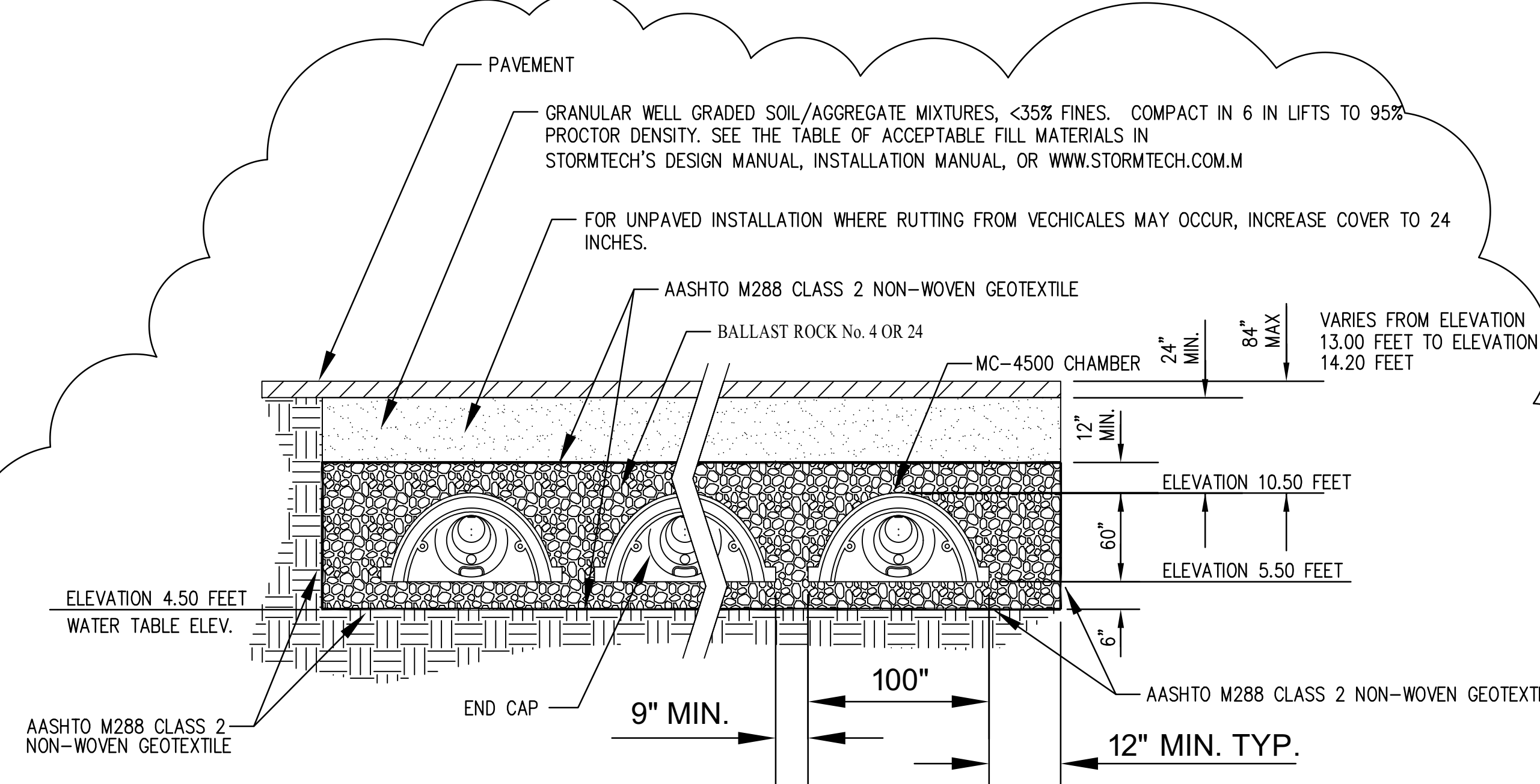
NO SCALE
TYPICAL ROLL-OVER CURB



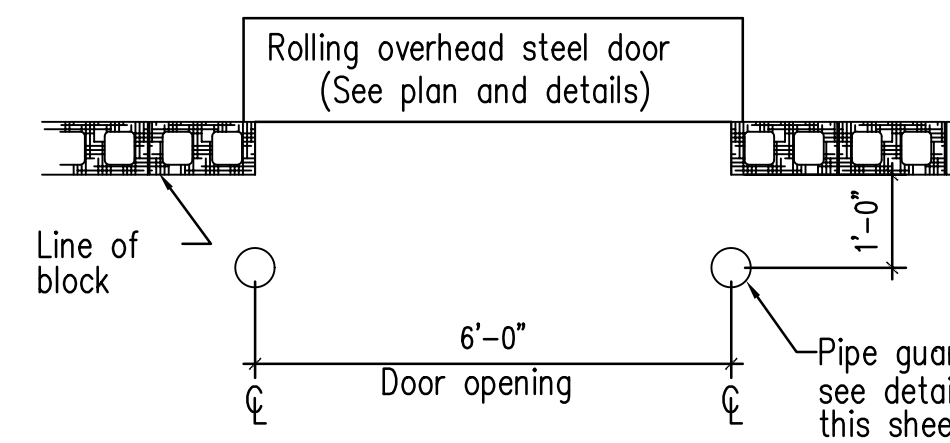
TYPICAL CONTROL JOINT



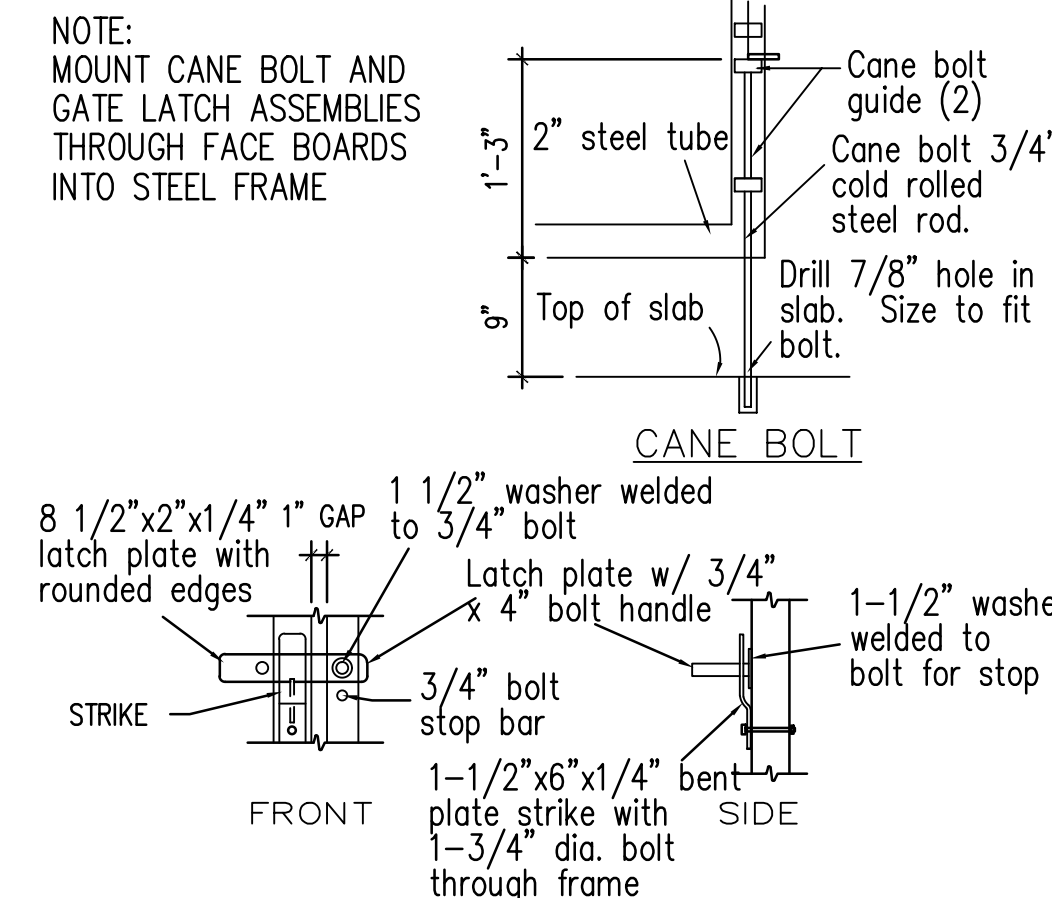
GATE DETAIL FOR DUMPSTER ENCLOSURE



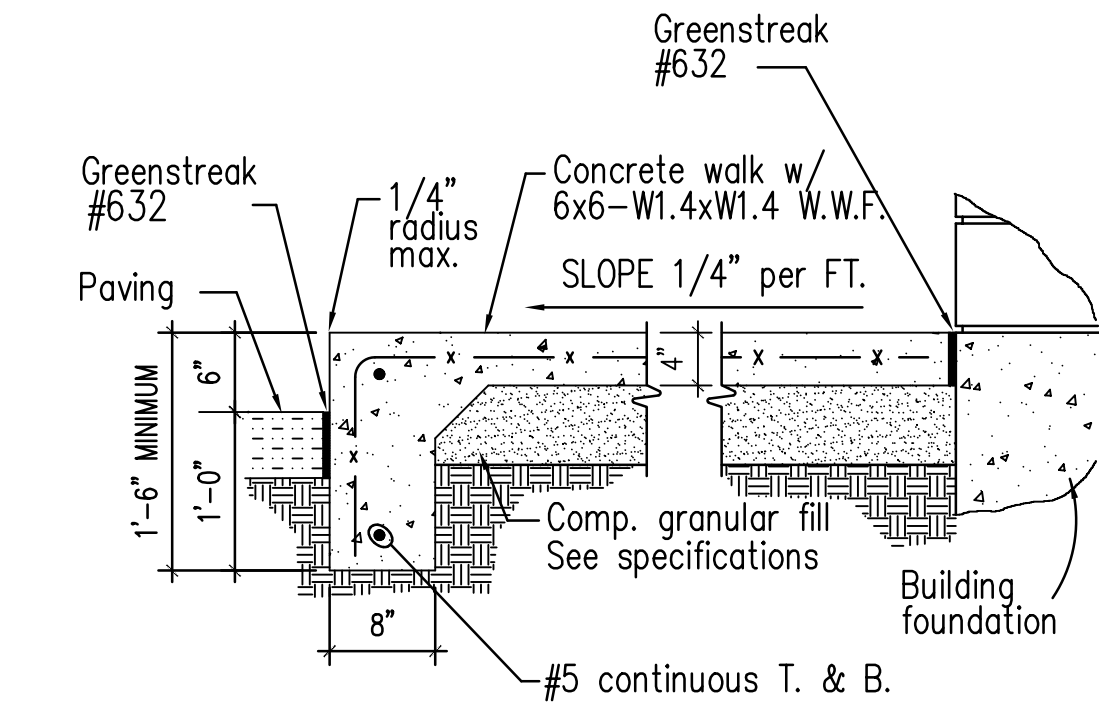
**STORMTECH MC-4500 CHAMBER SYSTEM
TYPICAL CROSS SECTION DETAIL**
NOT TO SCALE



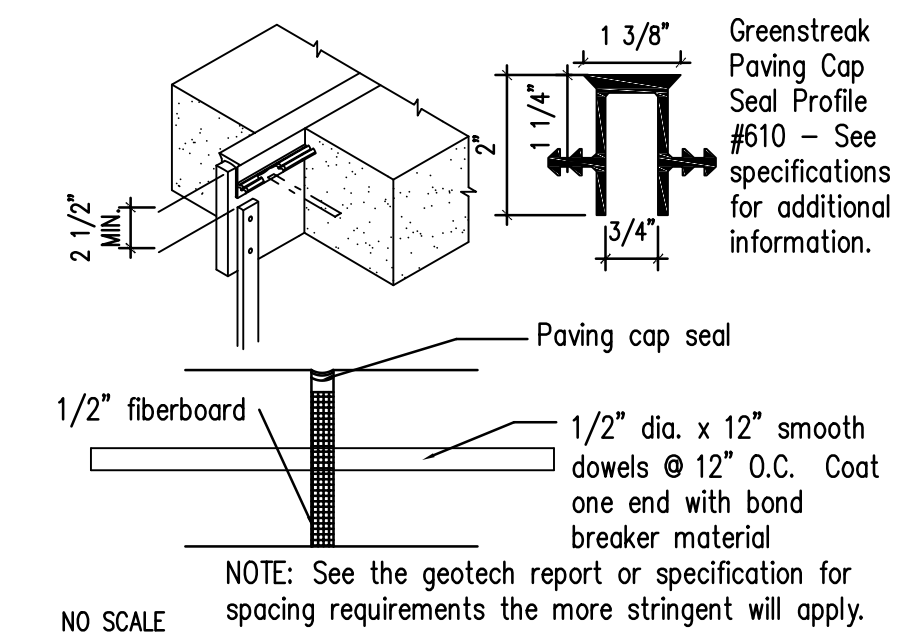
PIPE GUARD @ SERVICE DOOR



GATE LATCH / BOLT DETAILS

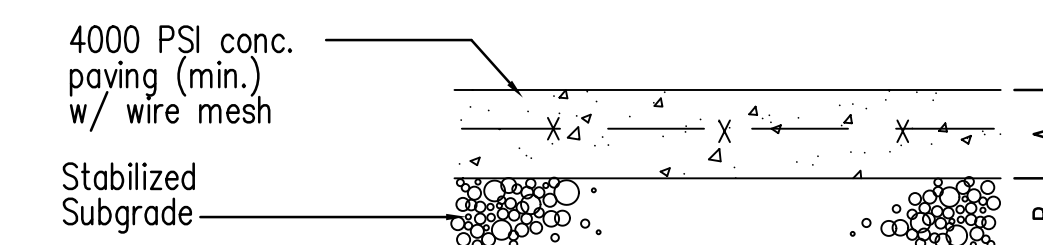


TYPICAL WALK SECTION AT BUILDING

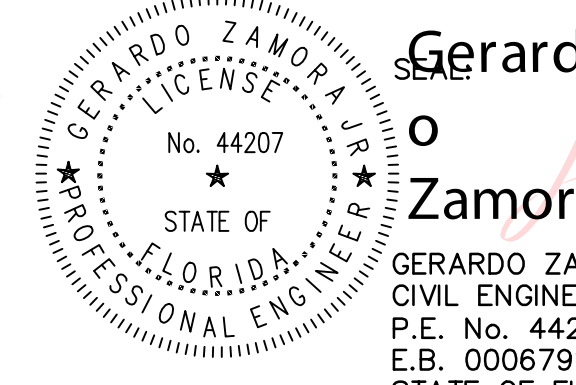


TYPICAL EXPANSION JOINT

DIMENSION & TYPE		
Concrete Section	A	B
Drive Aisle	6"	12"
Loading/Dumpster	8"	12"
Approaches	8"	12"

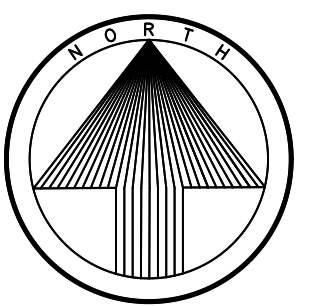


CONCRETE PAVING SECTION



Gerardo Zamora
No. 44207
STATE OF FLORIDA
PROFESSIONAL ENGINEER
DATE: 4/5/2017
PROJECT No. 2015-14
ZAMORA & ASSOCIATES, INC.
ENGINEERING LAND PLANNING
11410 N. KENDALL DRIVE SUITE 302 MIAMI, FLORIDA 33176
(305) 273-7801 FAX (305) 273-9514

OWNER:
AutoZone, Inc.
123 S. FRONT STREET, 3RD FLOOR
MEMPHIS, TENNESSEE 38103



PREPARED FOR:
AutoZone STORE DEVELOPMENT
Store No.: 6365
3001 W. Atlantic Avenue
Pompano Beach, FL 33069
PAVING & DRAINAGE DETAILS PLAN

SCALE: 1" = 20'-0"

REVISIONS

1. 1/5/18 COORDINATION
2. 8/2/18 STORMTECH
3. 11/7/18 BC COMMENTS
4. 1/17/19 BC COMMENTS
- 5.
- 6.
- 7.

ARCHITECT:
DRAFTSMAN: CEH
CHECKED BY:
DATE: 11/17/15
PROTOTYPE SIZE

AAC
PZ20-12000007
2/2/21

AAC
PZ20-12000007
03/03/2020